

LOVE HAS  
NO LIMITS™

FOSTERALL

A HOME FOR  
EVERY CHILD

FOSTER CARE  
**AWARENESS  
CAMPAIGN**

THERE ARE OVER

**30,000**

CHILDREN

currently in the Child Welfare  
System in Southern California.



That's nearly enough children to  
fill the Crypto.com Arena twice.

## About The Supporting Organizations

---

LHNL is a collaborative movement of faith communities providing the greatest display of love ever experienced. In partnership with FosterAll, faith communities across SoCal are uniting to share the call to foster and adopt the thousands of vulnerable children in foster care. FosterAll, a nonprofit organization, is dedicated to the recruitment and support of foster families. For over 39 years, FosterAll has guided thousands of parents through the foster/adopt process with more than 4,000 children placed in their homes.

During the campaign months of May and June, FosterAll's team will navigate the foster care system for parents who have expressed interest in foster or adoption, assist faith leaders with information on the need and provide support throughout the campaign.

Join this large scale multi-county Love Has No Limits campaign. Now is the time to activate your congregation to help.

## Our Foster Care Partners

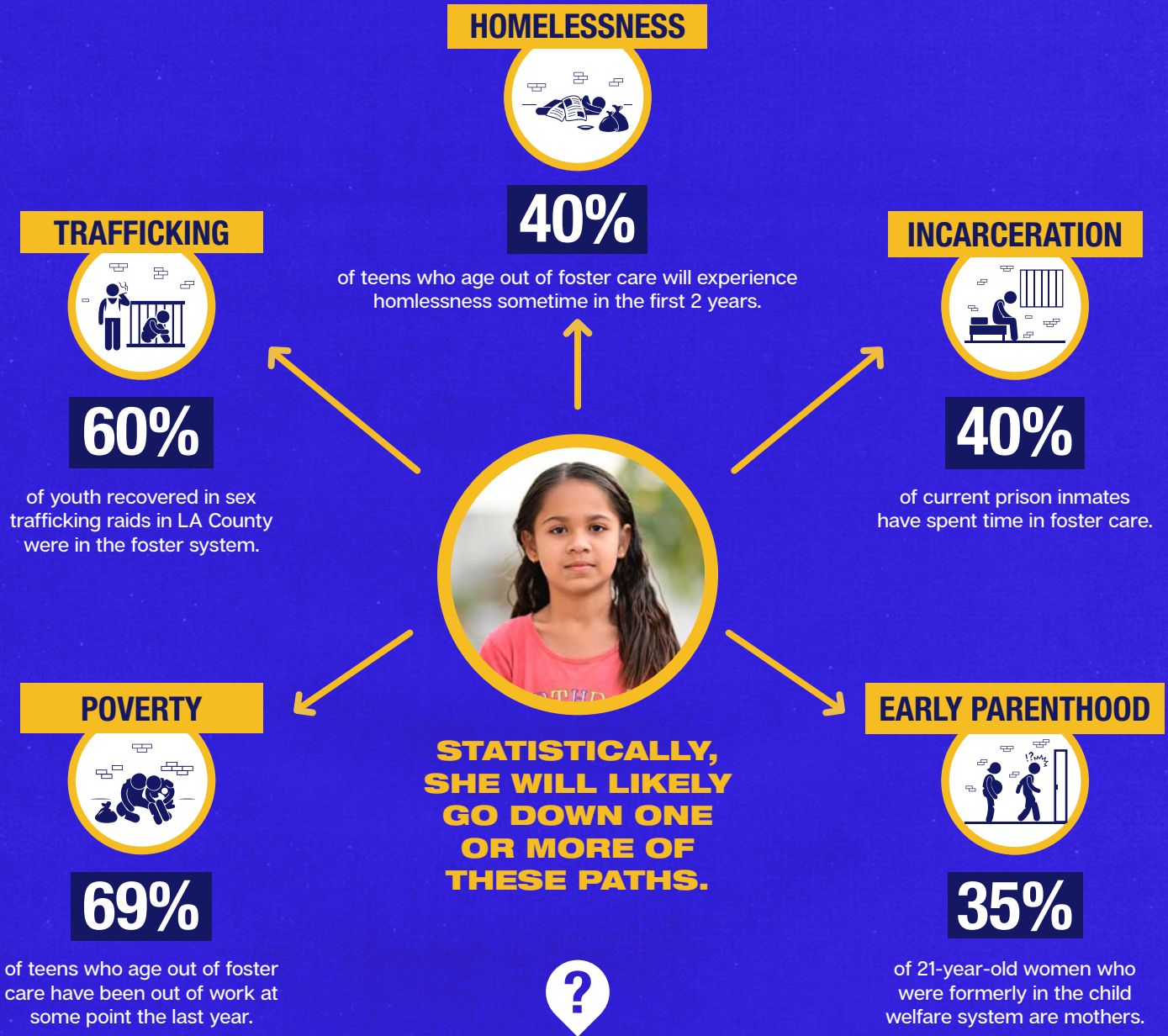
---



WITHOUT INTERVENTION, MANY KIDS MAY HAVE

# FIVE PATHS

WHEN THEY AGE OUT OF STATE CARE...



## WHAT IF...

FAITH COMMUNITIES ACROSS SOUTHERN CALIFORNIA UNITED TO GIVE THESE KIDS ANOTHER PATH.

# Core Messages

Talking points for sharing the vision.

- \* SoCal alone has more children in foster care than, not only any other county, but any other state in the United States of America. Many are “stuck” in the system with little hope of finding a family. The most vulnerable children are:
  - \* SIBLING SETS
  - \* TEENS
  - \* CHILDREN WITH DISABILITIES
  - \* TRANSITIONAL AGED YOUTH
- \* There are well over 400,000 children in the U.S. foster care system including over 30,000 here in SoCal. A small percentage of these children are available for adoption. Most of them just need a foster family until they can be reunified with their birth family.
- \* Kids who age out of the system without a family could end up in prison, addicted, pregnant, homeless, or trafficked.
- \* Our state and county leaders have asked us to step up to provide more foster & adoptive families to care for these children.
- \* Foster families need your support. From meals and childcare to tutoring and shopping, faith communities are perfectly positioned to care for the foster families who have answered the call to take in a child.
- \* We face an American problem. But the Faith Community can be the solution. If we can step up, the Faith Community will be the one our government leaders call when they need help.

# THE BIG CALL TO ACTION

## STEPS TO GET STARTED

1. Download the “Love Has No Limits Toolkit” loaded with videos and graphics you can use to advertise both digitally and in print to cast a strong vision.

**DOWNLOAD THE TOOLKIT AT [FosterAll.com/LHNL](https://FosterAll.com/LHNL)**

2. Schedule a service, meeting or moment to share this opportunity with your congregation. The FosterAll team is ready to support your moment with team members, speakers and informational assets.

3. Give your congregation the opportunity to step up. Encourage them to text in to start the journey to Foster or Adopt.



**Text ‘FAMILY’  
to 855-777-3131**

OR VISIT

**[FosterAll.org/LHNL](https://FosterAll.org/LHNL)**

Interested Foster/Adoption families will be contacted and coached through a step by step process by foster care and adoption professionals at FosterAll.

We’ll take time to answer questions and prepare them properly for the journey ahead.

# How Else Can You Support?

## Create a “Care” Community

---

Not everyone can foster, but **all can help**. Your organization could start a foster care ministry or program, if one does not already exist.

### This community circles around...

- \* Families in crisis to prevent children from being removed from their family.
- \* Current and new foster/adoptive families to ensure they and the child(ren) they are caring for have a great experience.

**Engage a Champion and FosterAll will assist in making the connections for you.**